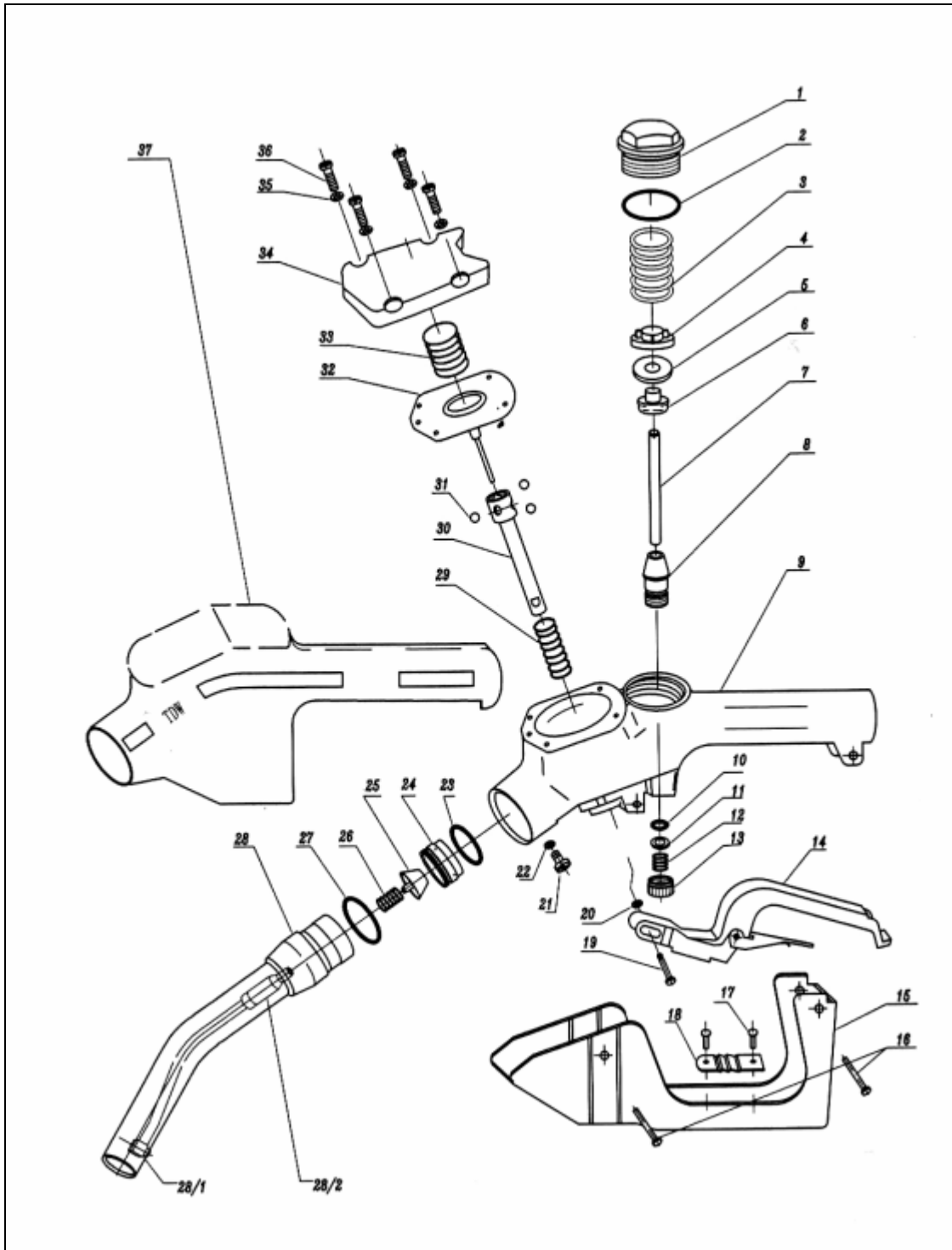


AdBlue Automatic Nozzle



No.	Spare Part Name	Material Type
1	Body Cap	304 Stainless Steel
2	O-ring for Body cap	Viton
3	Main Spring	316 Stainless Steel
4	Disc Holder	304 Stainless Steel
5	Disc	Viton
6	Skirt	304 Stainless Steel
7	Stem	304 Stainless Steel
8	Stem Guider	304 Stainless Steel
9	Nozzle body	304 Stainless Steel
10	O-ring, stem	Viton
11	Disc	304 Stainless Steel
12	Spring, stem	316 Stainless Steel
13	Screw, Stem guider	304 Stainless Steel
14	Attitude Device(Ball,Pipe)	304 Stainless Steel,Nylon
15	Lever Assembly	HD Nylon
16	Guard	HD Nylon
17	Rivet, Guard	304 Stainless Steel
18	Rivet, Flowrate control plate	304 Stainless Steel
19	Flowrate control plate	304 Stainless Steel
20	Pin,Lever	304 Stainless Steel
21	Belleville Spring,Lever	304 Stainless Steel
22	Screw	304 Stainless Steel
23	External teeth lock washer	304 Stainless Steel
24	O-ring, Check valve	Viton
25	Seat, Check valve	304 Stainless Steel
26	Poppet, Check valve	304 Stainless Steel
27	Spring, Check Valve	316 Stainless Steel
28	O-ring, Spout	Viton
28/1	Vacuum pipe assembly(inlet,pipe)	304 Stainless Steel, Nylon
28/2	Spout assembly	304 Stainless Steel
29	Spring,Latch plunger	316 Stainless Steel
30	Latch plunger	304 Stainless Steel
31	Balls, Latch plunger	304 Stainless Steel
32	Diaphragm sub assembly	Viton
33	Spring, Diaphragm	304 Stainless Steel
34	Vacuum cap	HD Nylon
35	External teeth lock washer	304 Stainless Steel
36	Screw, Vacuum cap	304 Stainless Steel
37	Plastic cover	PVC