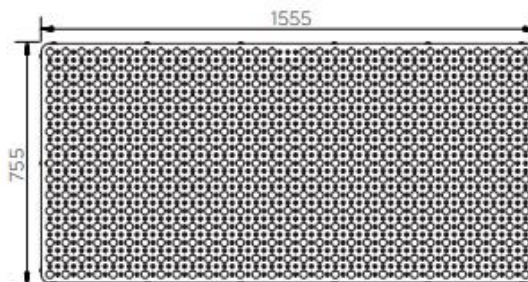
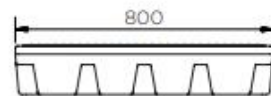
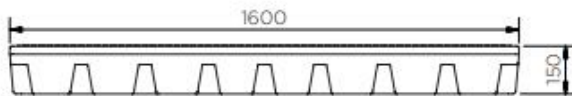
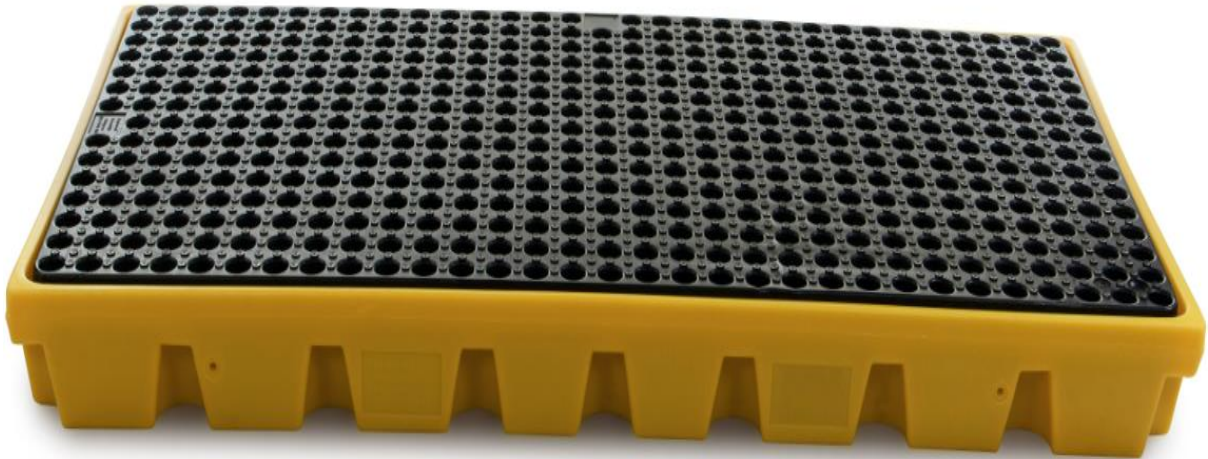


Use as stand-alone workstation or combined through optional under-linking connectors to create multiple workflow configurations. An optional poly ramp allows easy access for loading and unloading, and an optional joint cover strip can be added for a superior finish. Designed with a slip resistant removable platform. Safe working load capacity of up to 1350kg.



Specifications:

Sump capacity:	120 litres
Dimensions (W x D x H):	1600mm x 800mm x 150mm
Max. Working Load:	1350 kg
Weight:	24 kg
Material:	MDPE
Grate Included:	Yes