

**IMPORTANT: READ BEFORE USING**

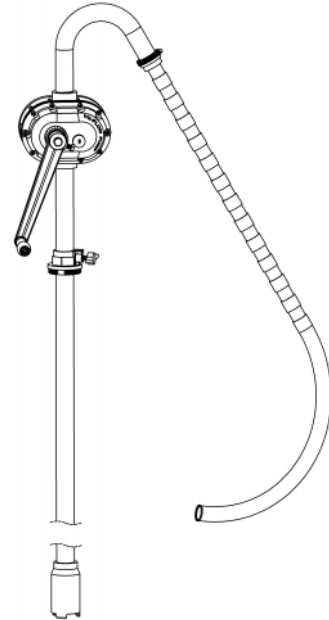
# Operating Instructions & Parts Manual

## High Flow Drum Pump

---

### Description

This pump is commonly used for dispensing or transferring non-corrosive and petroleum based fluids, such as Diesel, Kerosene, Gasoline/Petrol, Transmission Fluid, Machine Oil, Lube Oil, Fuel Oil, Anti-Freeze. Ideal for heavy-duty use in industrial, automotive and agricultural applications. Supply with a 2" BSP adapter to fit most common steel drums. This pump is a self-priming unit, dispenses approximately 100 litre/min. Do not use this pump with organic solvents, strong alkalis, strong acids or liquids which would react with the materials of construction.



### Specifications

Pump Type .....	Rotary - Vane
Flow .....	100 litre/min (approx)
Maximum Fluid Temperature .....	60°C
Bung Adapter .....	2" BSP Male
Suction Tube Length .....	101 cm
Inlet .....	1-1/4" O.D.
Outlet .....	1-1/4" O.D.
Wetted Materials of Construction .....	Aluminum, Steel & NBR
Maximum Viscosity .....	1000 mPas

### General Safety Information

1. Always carefully read, thoroughly understand and follow the pump operating instructions. Use this pump correctly and with care for the purpose for which it is intended. Failure to do may cause damage or personal injury, and will invalidate the warranty. Retain instructions for future reference.
2. Contact your chemical or fluid supplier to check for compatibility with pump prior to installation and operation.
3. Prior to use, always carefully and thoroughly read and understand the OSHA information contained in the Safety Data Sheet supplied for the fluid which is to be pumped.
4. Wear protective clothing (goggles, face masks, long sleeves, long pants, gloves, aprons, etc.) as set forth in the OSHA Safety Data Sheet when pumping any hazardous chemicals.
5. When using flammable liquids, pump containers should be grounded to avoid static discharge and ignition.
6. Any pump used for transferring flammable liquids must be stored in a ventilated area after use.
7. Pump should be flushed through before use as factory test lubricants may contaminate the fluids.
8. Prior to use, inspect your pump thoroughly verifying its proper assembly.

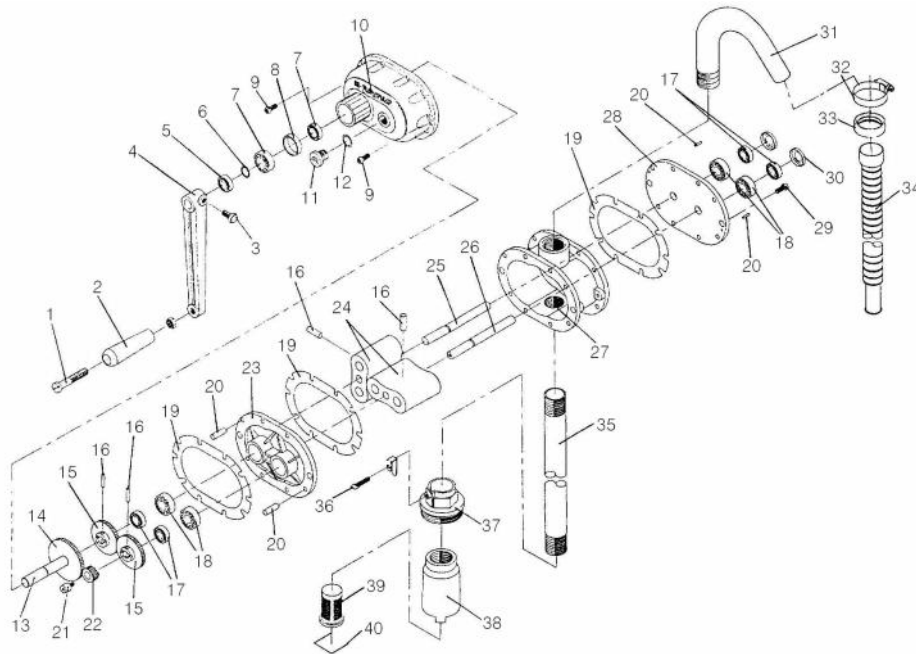
### Assemble and Installation

1. Check to see if all parts are included.
2. Assemble handle (Ref No. 1+2+3+4) to Reinforcement Shaft (Ref No. 13). Align set screw (Ref No. 3) to indent of Reinforcement Shaft (Ref No. 13) and tighten the set screw (Ref No. 3) to Reinforcement Shaft (Ref No. 13).
3. In order to avoid leakage, please use Teflon tape provided to suction pipe (Ref No. 35). Insert the bung adapter (Ref No. 36+37) into suction pipe (Ref No. 35) and thread suction pipe (Ref No. 35) into pump inlet.
4. Insert pump and suction tube assembled with bung adapter into the drum, and then tighten bung adapter thumb screw (Ref No. 36) by hand. Be sure to set pump and suction tube assembly so that the suction tube is at the desired depth in the drum and is not blocked.

## Operation

1. Fill gear box with SAE 10 oil or equivalent lubricant up to the reference line through the lubrication bolt hole sealed with rhombic bolt (Ref No. 11). insufficient lubricant can damage the gears. Inspect the oil level regularly.
2. Turn the handle in the clockwise direction to dispense.
3. A filter of #60 mesh polyethylene net is provided, located at the bottom of suction pipe. Motor revolution becomes harder when the filter is clogged. Remove and clean the filter periodically.
4. **Warning:** The pump will become harder to turn if used with high viscosity liquid, which may shorten the life of the pump. Do not pump with any solvent, chemical, waste oil and stained liquid.

## Repair Parts Illustration



## Repair Parts List

Ref No.	Description	Q'ty	Ref No.	Description	Q'ty	Ref No.	Description	Q'ty
1	Handle Rivet	1	15	Timing Gear	2	29	Screw	10
2	Handle	1	16	Pin	4	30	Bearing Cap	2
3	set screw	1	17	Oil Seal	4	31	Spout	1
4	Crank Arm	1	18	Bearing	4	32	Hose Band	1
5	Oil Seal	1	19	Cover Packing	3	33	Red Ring	1
6	Stop Ring	1	20	Pin	4	34	Delivery Hose	1
7	Bearing	2	21	Screw	1	35	Suction Pipe	1
8	Bearing Collar	1	22	Pinion Gear	1	36	Thumb Screw	1
9	Screw	10	23	Inside Cover	1	37	Bung Adapter	1
10	Gear Cover	1	24	Roots	2	38	Filter Body	1
11	Rhombic Bolt	1	25	Roots Shaft	1	39	Strainer	1
12	O-Ring	1	26	Roots Shaft	1	40	Filter Stopper	1
13	Reinforcement Shaft	1	27	Housing	1			
14	Reinforcement Gear	1	28	Outside Cover	1			