



Operating manual

HDM 60/80 eco box

Item. No.: 110 700 960, 110 700 980

Important!

The operating manual is always to be read before commissioning the equipment. No warranty claim will be granted for faults and damage to the equipment arising from insufficient knowledge of the operating manual.

Copyright

© HORN GmbH & Co. KG. All rights reserved.

Text, graphics and layout copyright protected. Reproduction and copying, including in part, only permitted with written permission. Technical changes reserved.

Service Hotline +49 1805 900 301
Repair Service +49 1805 900 302

service@tecalem.it

Document-No.: 441674005-GB-A
Translation of document-no.: 44 1674 005-DE-A
As of: 20.03.2014

Table of content

1	Safety instructions	4
2	Technical description	6
	2.1 Description / Intended use	6
	2.2 Versions	6
	2.3 Technical data.....	6
	2.4 Dimensional drawing.....	7
	2.5 Accessories	8
3	Assembly instructions	9
	3.1 Place / option of installation.....	9
	3.2 Suction line	9
	3.3 Electrical connection.....	11
4	Commissioning	12
	4.1.1 First and subsequent priming	12
5	Operation	12
6	Emergency operation	13
7	A2010 nozzle	13
	7.1 Description.....	13
	7.2 Intended use.....	13
	7.3 Function / safety equipment.....	14
	7.4 Operating instructions	14
8	Spare parts	16
9	Fault display - What to do if ... ?	20
10	Maintenance	20
	10.1 Regular inspections / maintenance work	20
	10.2 Cleaning the system.....	21
	10.3 Maintenance of the nozzle	21
	10.4 Type Plate and Warning Signs.....	21
11	Disposal	21
	11.1 Return of batteries.....	21
Appendix A:	Declaration of Conformity	22
Appendix B:	Declaration of conformity of the A2010 nozzle	23

1 Safety instructions

The device is a state of the art piece of equipment and has been constructed according to recognised safety specifications. It is nevertheless possible that use of the device will present hazards to the operator or to third parties, or may damage the device or other property. It is therefore essential to act in accordance with these safety instructions, and in particular with those sections identified as warnings.

Warning notices and symbols

In the operating manual, the following signs are used for highlighting important information.



Special information for economical usage of the equipment.



Special information or 'do and do not's for damage prevention.



Information or 'do and do not's for the prevention of damage to persons or equipment.

Intended use



The device shall only be used if it is in specified condition. The device shall only be used for its intended usage, in compliance with all relevant safety regulations, with awareness of the potential risks, and according to the operating manual. Any faults that may impair the safety must be rectified immediately.



The device and its components are only to be used for handling the liquids listed and the purpose described. Using the machine for any other purpose would constitute inappropriate use. The manufacturer is not responsible for any loss arising as a result of this. The risk for this is borne only by the operating company.

Organisational measures



This operating manual should always be available at the site of operation! Each person who is involved with the assembling, commissioning, maintenance and operation of the equipment must have read and understood the entire operating manual. The type plate and the warning notices attached to the device have to be observed and maintained in a fully readable condition.

Qualified personnel



The person operating, maintaining and assembling must be appropriately qualified for their work. The areas of responsibility, competences and supervision of the personnel must be precisely regulated by the operating company. If the operators do not have the required knowledge, they must be trained and instructed. The operating company must also ensure that the contents of the operating manual are properly understood by the operator.

Waters protection



The device is designed to handle water hazardous substances. The relevant regulations to protect the environment have to be fulfilled at the operating place.

Hydraulics



Only persons with special knowledge and experience with hydraulic systems are permitted to work on hydraulic parts and equipment. All lines, hoses and screw joints should regularly be checked for leaks and visible external damage. Any damage must be rectified immediately. Pressurised fluid can cause injuries and fire. During handling oils, greases or other chemical substances the relevant safety regulations for the product must be observed!

Maintenance and Service



For maintenance works at devices for flammable and/or water endangering substances consider the regulations of the water resources law. Use only authorized service companies. Before starting any kind of maintenance ensure that all fuel lines are pressureless, completely empty and aerated. Any changes, modifications or additions to the device are prohibited without consent of the manufacturer. Spare parts have to fulfil the specifications of the manufacturer. This is only guaranteed by original spare parts from the manufacturer.

Electric power



Only qualified electrician or trained persons under the guidance and supervision of a qualified electrician according to electro-technical guidelines are permitted to work on the electrical equipment. Before starting any kind of maintenance or repair work ensure that the device is de-energised.

2 Technical description

2.1 Description / Intended use

The HDM eco box pump system is an electrically driven pump for the refuelling of motor vehicles and the filling of containers with diesel fuel and fuel oil el.



The pump system may be operated exclusively with diesel fuel according to DIN EN 590 or DIN 51628 and fuel oil EL according to DIN 51603-1. In particular, combustible liquids with a flash point below 55°C or liquids with a temperature above their flash point must not be pumped!

The device comprises the delivery system fully mounted in a sheet steel housing. The main components are the feed pump, a flow meter, the dispensing hose with automatic nozzle and an automatic dispenser for controlling the dispensing procedure.

The used HDA eco automatic dispenser is optimised for the administration of small and medium-sized vehicle fleets and enables the administration of users and vehicles. Please also refer to the HDA eco operating manual, which is provided separately.

The installed pumping equipment is designed for a reliable performance with a maximum annual consumption of 150.000 litre of fuel. Users with higher annual consumption rates should select a device from the Horn-Tecalemit dispenser range that is better suited to their application.

2.2 Versions

The pump system HDM eco Box is available in the following variations:

HDM 60 eco Box Art. Nr.: 110 700 960

HDM 80 eco Box Art. Nr.: 110 700 980

2.3 Technical data

	HDM 60 eco box	HDM 80 eco box
Dimensions (WxHxD)	approx 550x470x340mm	
Media temperature	-10°C bis +35°C	
Ambient temperature	-20°C bis +55°C	
Suction connection	G1" internal thread	G1 1/4" flange with internal thread
Nominal suction height	3,5m	
Rated delivery rate	approx. 55 L/min	approx. 75 L/min
Voltage	230V 50Hz	
Power input	0,5kW	0,8kW
Protection class	IP 54	
Viscosity range	> 1mPa s bis 20 mPa s at 20°C	

* depending on system and viscosity

2.4 Dimensional drawing

Tankautomat HDA eco mit Folientastatur und zweizeiligem Display
Dispenser with keypad and two-line display - Automate de distribution HDA eco avec clavier et écran 2 lignes

Bohrungen für Bodenbefestigung
Holes for basement anchorage - Percage pour ancrage au sol

Automatik Zapfventil A2010 mit Drehgelenk
Automatic nozzle A2010 with swivel - Pistolet automatique A2010 avec liaison pivot

Gehäuse aus verzinktem Stahlblech Front und Rückwand; verzinkt und pulverbeschichtet
Casing out of galvanized steel plate - Coffre en tôle d'acier zinguée

Zapfschlauch (DN25 - HDM 80 eco Box / DN 19 - HDM 60 eco Box)
Discharge hose - Flexible de distribution

USB Anschluss
USB port - Port USB

Ovalradzähler
Oval gear flow meter - Débitmètre

Förderpumpe HDM 60/80 eco Box mit elastischer Lagerung
Transfer pump with elastic bearing - Pompe de transfert sur palier flottant

HDM 60 eco Box

1/4" Anschluss für Rücklaufleitung
1/4" connection for return tube - 1/4" connexion pour la ligne de retour

Öffnung für Saugleitung
Opening for suction tube - Ouverture pour tube d'aspiration

Öffnungen für elektrischen Anschluss
Opening for electric connection - Ouverture pour branchement électrique

Schloss
lock - serrure

HDM 80 eco Box

HDM 60 eco Box

HORN		Maßblatt HDM eco Box	
HORN GMBH & CO. KG		Dimensional Sheet HDM eco Box	
D-24837 FLENSBURG		MB-1674001-A	
Bezeichnung Description	Menge Quantity	Art. Nr. Part. No.	Blatt / Page
001	1	001	1
<small> Verantwortlich: Andreas Horn Verantwortliche/r: Andreas Horn Verantwortlich für: Technische Zeichnungen Verantwortliche/r für: Technische Zeichnungen Verantwortlich für: Produktion Verantwortliche/r für: Produktion Verantwortlich für: Vertrieb Verantwortliche/r für: Vertrieb </small>			
<small>© Horn GmbH & Co. KG</small>		<small>© Horn GmbH & Co. KG</small>	

2.5 Accessories

The following accessories are available for the HDM eco box dispenser:

Wall mounting bracket HDM eco box		233400374
Adjustment foot kit HDM eco box		233400375
Suction hose kit HDM 60 eco box		234338003
Suction hose kit HDM 80 eco box		234338001
Angle check valve G1"	Siphon protection, aboveground tank, HDM 60 eco	233400181
Angle check valve G1 1/4"	Siphon protection, aboveground tank, HDM 80 eco	233400182
Angle check valve G1"	f. underground tank, HDM 60 eco	233400187
Angle check valve G1 1/4"	f. underground tank, HDM 80 eco	233400188
Filter including filter holder	(Installation in pressure line; including water absorber)	233400180
Bevel seat filter 1"		233400185
Bevel seat filter 1 1/4"		233400186

3 Assembly instructions

Before assembling and commissioning the device, check that the equipment is complete and undamaged.

Be aware and follow the regulations of health and safety.



Commissioning of incomplete or damaged equipment is not allowed!

3.1 Place / option of installation

The HDM eco box pump system is designed for outdoor operation. The place of installation must guarantee that harmful environmental influences – such as sea water – cannot attack the components.

The local regulations for installation and operation of devices for handling substances hazardous to water and environment as well as any official approvals are to be observed or obtained by the operator.

Installation, commissioning and maintenance are to be carried out by a specialist company which has ability and approval for hydraulic and electric installations.



The equipment is to be installed and operated on even and adequately stable (floor) surface. In case of limited deviations in height it is possible to use the adjustment foot kit from the accessory list. For space requirements, see the technical data.

As an alternative it is possible to use the wall bracket from the accessory list. Use only suitable fastening elements in dependency of the wall or ground.



The equipment must not be used in explosive areas!

3.2 Suction line

The suction line for the pump system is equipped with a G1" female thread (HDM 60 eco box) or rather with a G1 ¼" flange (HDM 80 eco box).

Installation of a corrugated pipe or similar compensating element between the pump flange and suction line is required for a stress-relieved connection. Otherwise damage to the lines or excessive noise generation cannot be excluded.

To avoid negative effects of sound generation or reliability take care that there is no contact between any part of the suction line and the housing.

The length of the suction pipe and the suction height has a considerable effect on the pumping capacity of the pump system. In order to obtain the optimum pumping capacity of the pump system, the suction line must be kept as short as possible (<2m).

The nominal diameter of the suction line must be at least DN25 (HDM 60eco box) or rather DN32(HDM 80 eco box).

Suctions lines with diameters of 1 ¼" may not exceed 6 m in length. The suction height should be no more than 3,5m.

For the position on top of a tank you can find a complete suction hose set in the accessory list.

For the right dimensioning of the suction pipe ask the Horn-Tecalemit service.



For all systems, pressure relief of the pump system must be possible via the suction line. No additional non-return valve without pressure relief is permitted to be installed in the suction line if no return pipe is used.



It must be ensured by the customer that no dirt can reach the meter and the pump. To guarantee this a filter must be installed in the suction pipe by the customer. (A suitable filter you can find in the accessory list)



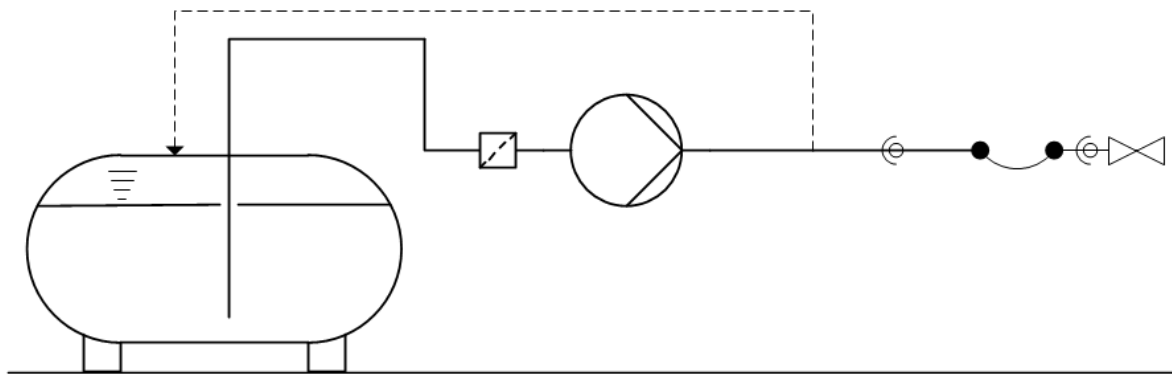
It must be ensured by the customer that no rise in pressure above 1,5bar is possible, for example, due to thermal expansion.



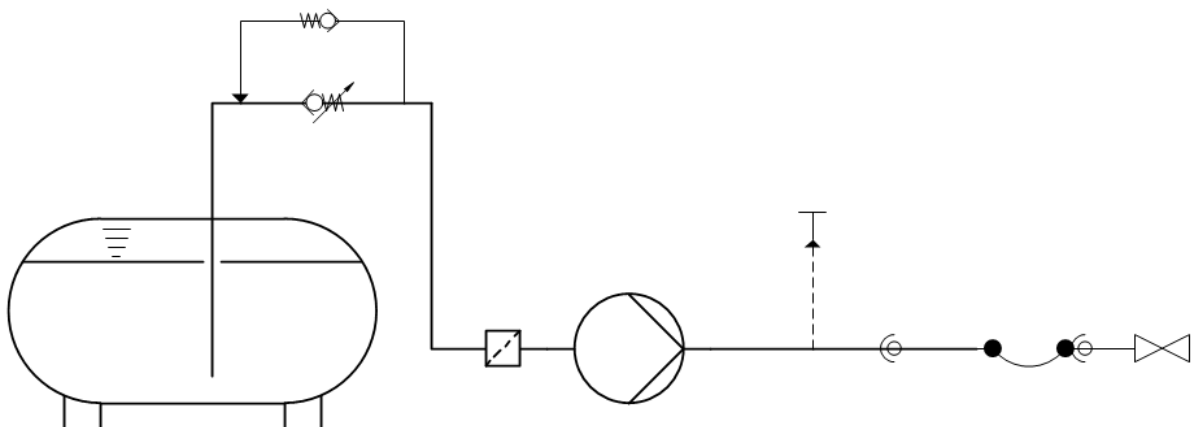
In the case of above-ground tanks, a suitable anti-syphon valve or return pipe must be installed by the customer. This avoids environmental damages by unintentional emptying of the tank.

In the following diagrams you can see the possible variants of installation.

1. Standard case: Installation above fluid level with DN10 return pipe (customer installed)

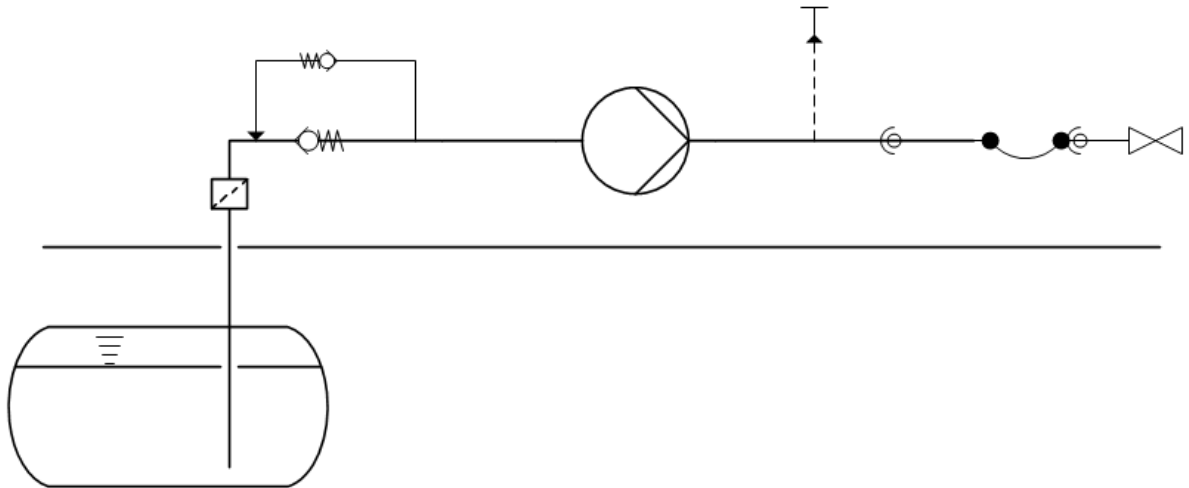


2. Special case: Installation below fluid level. For this kind of installation an angel check valve with preselected suction pressure and pressure release is necessary and recommended. G1" - 233400181 or G1 ¼" - 233400182



Special case: Installation with buried tank. For this kind of installation an angel check valve and pressure release is also recommended. This avoids the breakdown of the liquid column in the suction line.

G1" -233400187 or G1 ¼" - 233400188



3.3 Electrical connection



Work on the electrical equipment of the device may only be carried out by a qualified electrician or by trained persons under the guidance and supervision of a qualified electrician according to electro-technical guidelines.



For the failure-free operation, an electrical connection from the distribution box with residual current circuit breaker must be used!



'Protective earth' *must* always be connected.

The power supply is to be connected according to the circuit diagram shown in the HDM eco operating manual.

Data interfaces and floating switches / fill level probes may also be connected to the HDA eco. For more information, please refer to the HDA eco operating manual.

4 Commissioning

4.1.1 First and subsequent priming

The pump is a self-priming vane-cell pump. For commissioning, therefore, all that is required is to carry out a 'normal refuelling' as described in section **Fehler! Verweisquelle konnte nicht gefunden werden.**, in which medium is sucked out of the tank. In order to prevent damage to the pump and seals, it must be ensured that the pump does not run dry for an unnecessarily long period. A normal priming procedure should not take longer than 2 minutes. If the medium has not been primed within this time, the suction line must be inspected for leaks and the function of the return pipe must be checked.

Unnecessarily long dry running (> 1 min) has to be avoided since otherwise important components may be destroyed.

Approx. 30 litres should be discharged into a collecting vessel to ensure that any air bubbles in the suction line are thoroughly flushed out. Dispose of this amount as flushing fluid.

5 Operation

The following must be observed for normal operation:

- ! **Avoid dry running (>1min).**
- ! **A defective hose can cause contamination.**
- ! **If the nozzle is closed and the pump is filled with medium, the pump may be operated for a maximum of 2 minutes, otherwise excessive heating up may occur, resulting in the destruction of important components.**
- ! **After the filling procedure, the nozzle must be hung up in the nozzle holder and the hose protected against being driven over by hanging it on the hose holder.**
- ! **Only vehicle tanks and suitable containers may be filled. The dispensing procedure must be supervised.**

To draw off fuel in normal operation, proceed as follows:

1. Identify yourself at the dispensing station as described in the HDA eco operating manual in order to activate the station.
2. Switch on the pump by drawing the nozzle.
3. Put the nozzle into the container or the vehicle tank.
4. Open the nozzle until the desired quantity has been dispensed.
5. Replace the nozzle to the nozzle holder. The electric pump switches off automatically.

Please follow the nozzle operation manual or section 9 as well.

6 Emergency operation

HDM eco box pump systems are equipped with an emergency operation mode which enables emergency operation of the pump, if the HDA automatic dispenser unit is not functional.

To do this, proceed as follows:

- Open the housing with the key.
- Activate the emergency operation mode on the underside of the HDA eco. The filling pump starts up automatically.
- Implement the tanking process.
- Immediately after completing the tanking process, the filling pump must be deactivated by switching off at the emergency operation switch
- To protect from unauthorised use, the housing must be closed after each tanking process.

7 A2010 nozzle

7.1 Description

The HDM eco dispenser is equipped with an automatic nozzle of the type A2010. It is an automatically closing full-hose nozzle for dispensing the liquids specified above. The A2010 automatic nozzle has been tested in accordance with the DIN EN 13012 standard.

The standard features of the nozzles include: a safety switch-off and a covering that protects against wear and cold conditions.

Moreover, the type A2010 nozzles feature a 3-stage holding clip for the control lever and a spring around the outlet pipe to lock the latter in the tank filler pipe.

Other nozzles can also be used as special equipment. The corresponding operating manuals are to be followed for these.

7.2 Intended use

The automatic nozzles are manufactured state of the art and failsafe.



However these products may pose great risk when not used according to specifications.

Persons concerned with assembly, commissioning, maintenance and operation of the automatic nozzle must have read and understood the entire manual.



The A2010 automatic nozzles are certified exclusively for dispensing diesel fuel in accordance with DIN 590 or DIN 51628, biodiesel (RME) in accordance with DIN EN 14214 and fuel oil EL in accordance with DIN 51603-1.



Using the machine for any other purpose would constitute inappropriate use. The manufacturer accepts no liability for resulting damages; the risk shall be borne by the operating company alone in such cases.

Intended use also means complying with the assembly, commissioning, operating and maintenance conditions specified by the manufacturer.

The local safety and accident prevention regulations apply to the operation of the automatic nozzles.

Use extends to:

- Dispensing installations at petrol stations (in Germany: TRbF 40, No.4.1.1.6 and TRWS 781-2)

- Filling of mobile containers and fuel tanks of working machinery outdoors (in Germany: TRbF 30, annex 4)
- Filling single tanks with a capacity of up to 264 gallons for the storage of diesel fuel and heating oil (in Germany: TRbF 20, no. 9.3.2.3, section 3)

7.3 Function / safety equipment

The closing valve of the A2010 automatic nozzle can only be opened manually using the control lever. An automatic shutdown occurs as a result of negative pressure or shaking when

- the tank is full, i.e. fuel fills the sensor jet on the outlet pipe.
- the nozzle is held vertically (see fig. B).
- the nozzle with locked control lever falls down.

Switching-off can also be performed manually by releasing the holding clip (if present) on the control lever.

7.4 Operating instructions

The A2010 automatic nozzles are ready for use. No adjustment or lubrication needs to be carried out.



Smoking is generally prohibited, also when drawing off diesel and heating oil EL. Sources of ignition, such as fire, flying sparks etc., must be eliminated.

1. Insert the outlet pipe into the tank filler pipe to the extent that it will remain securely in the tank filler pipe (see fig. A). This also ensures that the nozzle shuts down when the fuel tank is full.
2. For product variants with a holding clip guide the latter towards the protective bracket and latch the control lever.

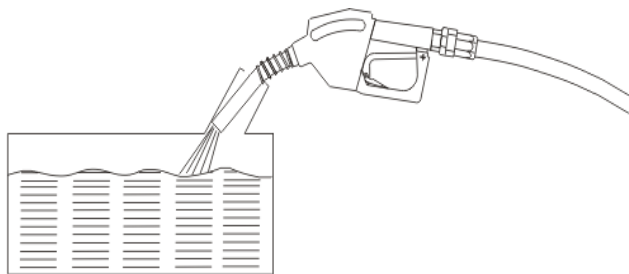


Fig A

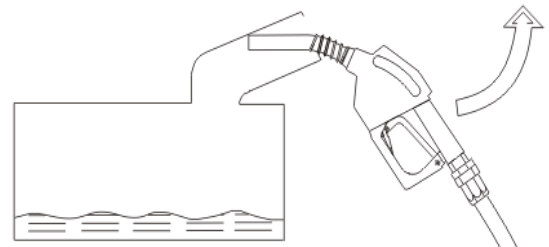


Fig B

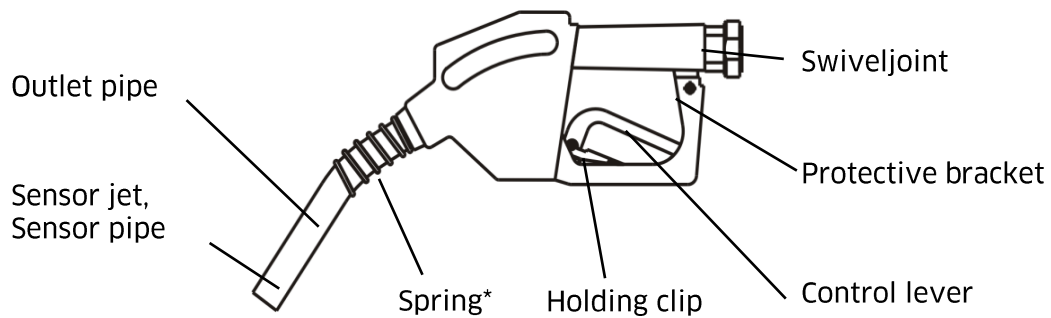
3. Once the nozzle has automatically shut down, tilt the nozzle towards the tank for a few seconds until the last drops have dripped out of the outlet pipe. This is also to be recommended when the filling procedure is ended manually.
4. If the nozzle can only be locked as shown in fig. B, it is not possible to fill the fuel tank. The nozzle shuts down immediately. Guide the nozzle in the direction of the arrow (see fig. B) to a position as shown in fig. A. The nozzle must be held in this position throughout the filling procedure. Items 2 and 3 apply accordingly.



If small amounts are re-filled manually and when filling with the control lever locked, the volume flow may be less than the minimum allowed. In this case, the automatic shutdown of the nozzle can no longer work reliably! The fuel tank may be overfilled.



The filling process must be supervised even when using an automatically-closing nozzle!



8 Spare parts

Housing, see drawing ET-1674001

10	Housing including door	816740001
20	Hose holder, complete	816748004
30	Door, complete	816740003
40	Nozzle holder with nozzle switch (including screws)	816658006
50	Plastic cover including screws	816748001
60	Lock including 2 keys	816748002

Hydraulic system, see drawing ET-1674002

10	Pump, HDM 80 eco, with attachments	816740002
20	Rubber buffer set, pump support	816748007
30	Connection hose HDM 80 eco	421301540
40	Pump, HDM 60 eco, with attachments	816740002
50	Return pipe HDM eco box	816748005
60	Connection hose HDM 60 eco (BSP Thread)	421301560
70	Threaded part (BSP Thread)	516670004
80	Clamp ring	516670005
90	Oval gear meter, FMOG-100	916670001
100	Flange for wall opening	516670006
110	Seal & screw set for meter installation	816748006
120	Swivel joint for wall opening G1" IA BSP	616650008
130	Elbow 90° G1" BSP	406000950
140	Dispensing hose, DN19 4m	421202250
150	Dispensing hose, DN25 4m	421301100
160	Swivel joint for nozzle 1" I - 3/4" A	616650006
170	A2010 nozzle	405301800

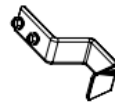
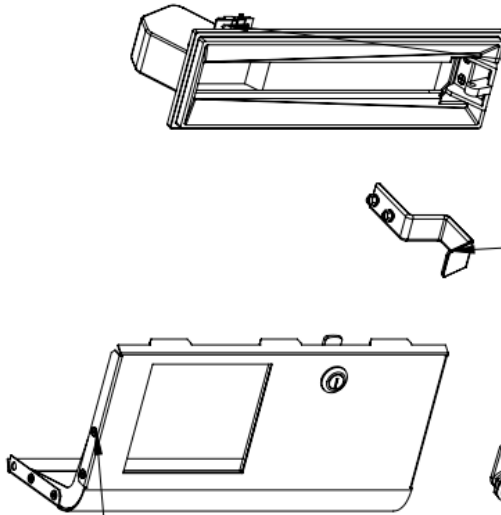
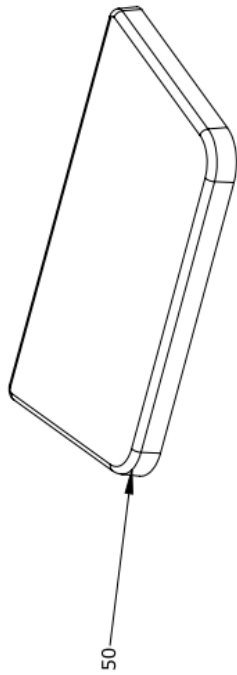
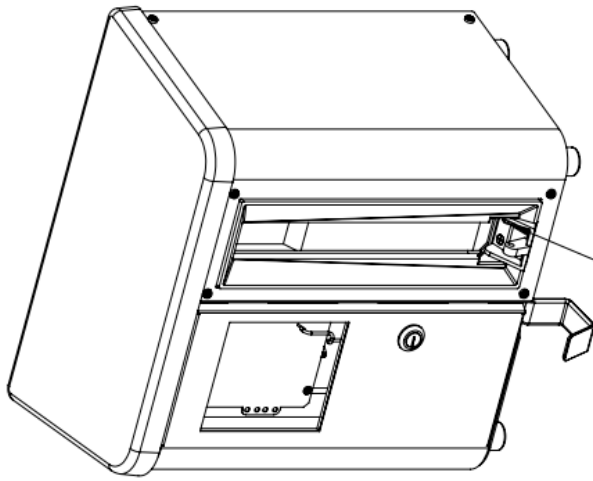
Electronic system, see drawing ET-1670001

10	PCB, HDA eco automatic dispenser	816708004
20	USB cover set	816708002
30	HDA eco cover including keyboard membrane & RFID antenna	816708003
40	Buffer battery (exchange every 5 years)	450600900
50	Fuse, HDA eco	450506200

Signs

Type plate, HDM 60 eco	420004171*
Type plate, HDM 80 eco	420004172*

* Please indicate the serial number, year of manufacture and features of the dispenser when ordering type plates



50

30

60

20

40

10

Pos.	Anz.	Benennung	Description	ArtikeInr.
10	1	Gehäuse HDM eco Box	Housing HDM eco Box	816740001
20	1	Schlauchhalter komplett	Hose bracket	816748004
30	1	Tür mit Anbauteilen	Door	816740003
40	1	ZV-Tasche komplett	Nozzel holder	816658006
50	1	Deckel komplett	Top cover	816748001
60	1	Schloss komplett	Lock	816748002

HORN		TECAL		EMMIT	
HORN GMBH & CO. KG D-24937 FLENSBURG					
Bezeichnung	06.03.12	J.	Fritische	Name	
Gepr.	08.03.12	D.	Holste	Datum	
Freig.	08.03.12	J.	Möhr	Name	
<input checked="" type="checkbox"/> AV	<input type="checkbox"/> WE	<input type="checkbox"/> SCHL			
<input checked="" type="checkbox"/> M1	<input type="checkbox"/> M2	<input type="checkbox"/> M3			
<input type="checkbox"/> Dreherlei	<input type="checkbox"/> E-MONT				
<small>Schweißnormen nach DIN ISO 14016 Oberflächentoleranzen in accordance with ISO 14016 Oberflächenrauheiten in accordance with ISO 14016 Verwindung und Kippung sind zu berücksichtigen Zusammenbauhinweise sind zu beachten Alle Rechte für den Fall der Patent-, Gebrauchsmuster-, U.S. - oder Markenrechte vorbehalten</small>					

Ersatzteile / Spare parts

Gehäuse / Housing HDM eco Box

ET-16740001-A

Art. Nr.:

Blatt 1

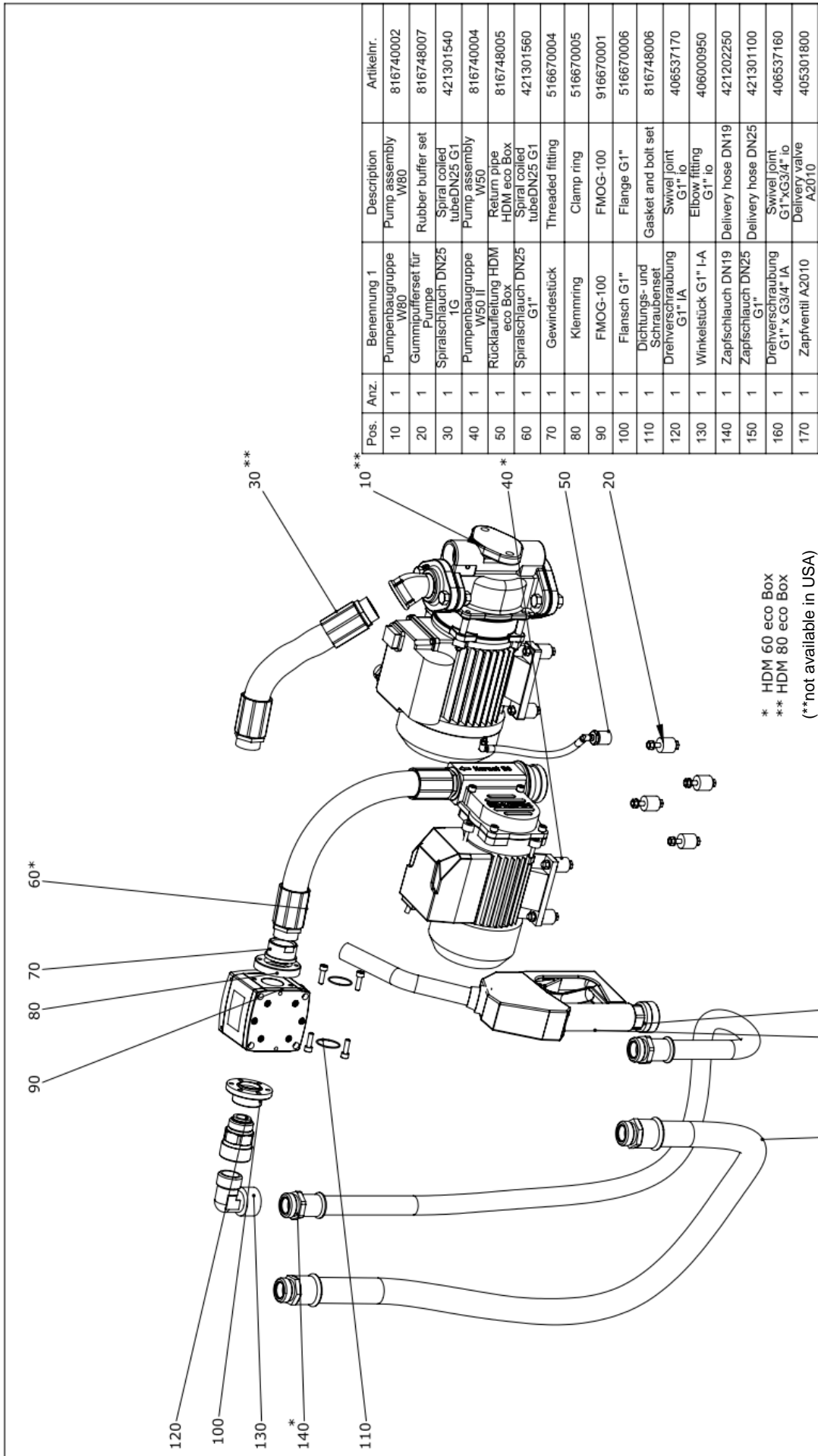
Bl. 1

Allgemeintoleranz DIN ISO 2768 - Toleranzklasse m-k

Oberflächen nach DIN ISO 1302

© 2012 Horn GmbH & Co. KG

Flensburg, 1933 12



Pos.	Anz.	Benennung 1	Description	ArtikeInr.
10	1	Pumpenbaugruppe W80	Pump assembly W80	816740002
20	1	Gummipuffer set für Pumpe	Rubber buffer set	816748007
30	1	Spiralschlauch DN25 1G	Spiral coiled tube DN25 G1	421301540
40	1	Pumpenbaugruppe W50 II	Pump assembly W50	816740004
50	1	Rücklaufleitung HDM eco Box	Return pipe HDM eco Box	816748005
60	1	Spiralschlauch DN25 G1*	Spiral coiled tube DN25 G1	421301560
70	1	Gewindestück	Threaded fitting	516670004
80	1	Klemmring	Clamp ring	516670005
90	1	FMOG-100	FMOG-100	916670001
100	1	Flansch G1*	Flange G1*	516670006
110	1	Dichtungs- und Schraubenset G1* IA	Gasket and bolt set	816748006
120	1	Drehverschraubung G1* IA	Swivel joint G1* io	406537170
130	1	Winkelstück G1* I-A	Elbow fitting G1* io	406000950
140	1	Zapfschlauch DN19 G1*	Delivery hose DN19	421202250
150	1	Zapfschlauch DN25 G1*	Delivery hose DN25	421301100
160	1	Drehverschraubung G1" x G3/4" IA	Swivel joint G1" x G3/4" io	406537160
170	1	Zapfventil A2010	Delivery valve A2010	405301800

HORN TEGALEMITE
HORN GMBH & CO. KG
D-24937 FLENSBURG

Bezeichnung: AV WE SCHL
 M 1 M 2 M 3
 Dreherei E-MONT

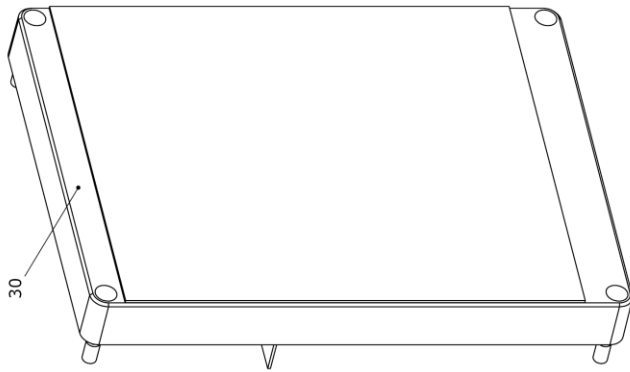
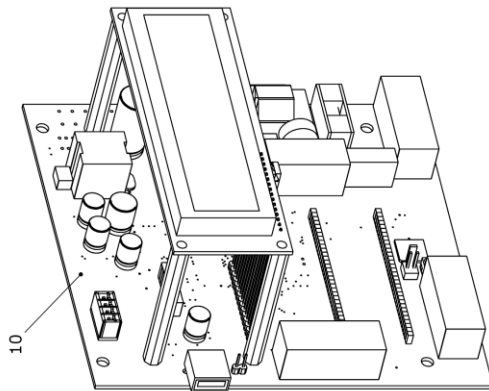
Bezeichnung: **Ersatzteilzeichnung / Spare parts**
Hydraulik/Hydraulics HDM eco Box
ET-1674002-A

Art. Nr.:

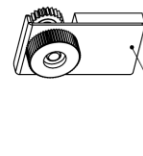
Blatt 1
 Bl. 1

Algemeintoleranz DIN ISO 2768 - Toleranzklasse m-K
 Oberflächen nach DIN ISO 1302
 CAD-Datenname: ET-1674002-Hydraulik HDM eco Box
 Druckdatum: 08.03.12

Platine inkl. Pufferbatterie und Programmierung
 PCB incl. battery and programming
 Platine avec batterie et programmation



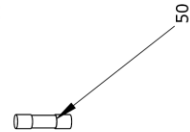
Abdeckung inkl. Tastaturfolie und RFID Antenne
 Cover incl. keypad and RFID antenna
 Couverture avec clavier et antenne RFID



20
 USB Abdeckung
 USB Cover
 Protection USB



40
 Pufferbatterie
 Battery
 Batterie



50

Pos.	Benennung 1	Benennung 2
10	Platine HDA eco	Ersatzteil
20	Set USB Abdeckung	Ersatzteil HDA eco
30	Abdeckung inkl. Tastaturfolie & RFID Antenne - Ersatzteil HDA eco	RFID Antenne - Ersatzteil HDA eco
40	Batterie CR2032-3V	
50	Glassicherungseinsatz	6,3A träge

HORN TECALEMIT	
HORN GMBH & CO. KG D-24537 FLENSBURG	
Name	
Datum	
Beauf. 06.05.11 O. Holste	
Gene. 09.05.11 M. Wobke	
Freig. 09.05.11 C. Carstensen	
Art. Nr.:	
HDA eco	
Ersatzteilzeichnung / spare parts	
ET-1670001-B	
Blatt 1	
Bl. 1	
Allgemeintoleranz DIN ISO 2768 - Toleranzklasse m-K	
Oberflächentoleranz DIN ISO 2768 - Toleranzklasse m-K	
CAD-Daten: ET-1670001-HDA.eco	
Druckdatum: 18.05.11	

9 Fault display - What to do if ... ?

... the pump runs, but the automatic nozzle immediately shuts off again?

- The sensor pipe of the automatic nozzle is clogged: The nozzle must be cleaned.

... the pump runs, but no medium is pumped?

- Storage tank is empty: hang up the nozzle immediately and refill the tank
- Air has entered the suction line: hang up the nozzle immediately and fill the suction line as described above.

...the pump does not start up after drawing the nozzle?

- The dispenser is disabled due to too many zero refuelling procedures: Enable the dispenser as described in sections Fehler! Verweisquelle konnte nicht gefunden werden. and Fehler! Verweisquelle konnte nicht gefunden werden. and check whether there is a technical defect.

...the pump runs, but insufficient medium is pumped?

- The filter in the suction line is blocked and must be cleaned.
- The optional fine filter at the pressure site is blocked and the filter cartridge must be changed.

Please also refer to the troubleshooting information in the HDA eco operating manual.

10 Maintenance



For any maintenance the valid and applicable accident prevention regulations must be observed. Disconnect the device from the power supply and depressurise it when carrying out maintenance work. Secure it against being unintentionally switched on. Maintenance and repair work may only be carried out by specially-trained service technicians.

Although the HDM eco dispenser is to a large extent maintenance-free, the following work should be performed regularly in order to ensure reliable operation.

10.1 Regular inspections / maintenance work

Components	Inspections / maintenance work	Inspections / maintenance work		
		Weekly	Monthly	As required / in case of malfunction
Automatic nozzle	Check the automatic function		X	X
Nozzle holder	Clean with water and non-aggressive household cleaning agent			X
	Lubricate the switch flap with non-resinating spray oil		X	X
Discharge hose	Check the discharge hose for damage and increased wear		X	X
Hydraulic components	Check the system visually for tightness		X	X

The maintenance intervals are maximum periods that must be shortened in the case of difficult operating conditions (e.g. heavy use, careless users).

10.2 Cleaning the system

Clean dirty outsides carefully with a damp cloth and gentle household cleaner. Do not use aggressive (e.g. abrasive, chlorinated) cleaning agents or solvents. The equipment must not be cleaned with a high-pressure cleaner or water jet.

10.3 Maintenance of the nozzle

Make sure that the sensor jet on the outlet pipe is always open. The nozzle does not work if the sensor jet is dirty. Any dirt particles can be removed using a suitable wire. Greasing or oiling is not necessary.

10.4 Type Plate and Warning Signs

! The warning signs attached to the device and the type plate must be well readable. Dirty signs must be cleaned, and replaced if necessary.

11 Disposal

The device is to be emptied completely and the liquids properly disposed of in case it is taken out of service.

The equipment is to be disposed of properly when taken permanently out of service:



- Return old metal for recycling.
- Return plastic parts for recycling.
- Return electronic waste for recycling.



The water legal regulations are to be followed.

11.1 Return of batteries

Batteries must not be disposed of with the domestic waste. Batteries can be returned free of charge via a suitable collecting point or to the dispatch stores. Consumers are legally obliged to return used batteries.

Batteries that contain harmful substances are marked with a crossed out dustbin (see above) and the chemical symbol (Cd, Hg or Pb) of the heavy metal that is decisive for the classification as containing harmful substances:

1. "Cd" stands for cadmium.
2. "Pb" stands for lead.
3. "Hg" stands for mercury.



**Konformitätserklärung
Declaration of Conformity**

Hiermit erklären wir, dass die Bauart
We herewith declare that the construction type

Typ: **HDM eco Box**
Type:
Bezeichnung: **Pumpsystem für Diesel**
Designation: **Pump system for Diesel**
Artikel-Nr.: **110700960, 110700980**
Item No.:

in der von uns gelieferten Ausführung folgenden einschlägigen Bestimmungen entspricht:
in the form as delivered by us complies with the following applicable regulations:

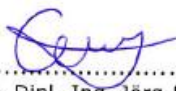
- Maschinenrichtlinie 2006/42/EG
Machinery safety 2006/42/EC
- EMV-Richtlinie 2004/108/EG
Electromagnetic compatibility 2004/108/EC

Angewendete harmonisierte Normen:
Applied harmonised standards:

EN ISO 12100-1, -2 EN 60204-1

EG-Dokumentationsbevollmächtigter: Jörg Mohr Horn GmbH & Co. KG
EC official agent for documentation: Munketoft 42
24937 Flensburg

09.03.2012
Datum
Date


.....
i.V. Dipl.-Ing. Jörg Mohr
Entwicklungsleiter / *Engineering Manager*

HORN GmbH & Co. KG
Munketoft 42
D-24937 Flensburg
Germany

T +49 461 8696-0
F +49 461 8696-66
info@tecalem.it.de
www.tecalem.it.de

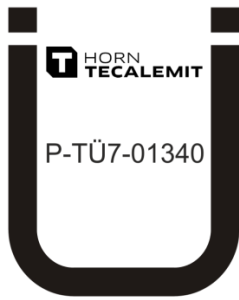
Geschäftsführer:
Torsten H. Kutschinski

Commerzbank AG
BLZ 215 400 60
Konto-Nr. 2476000

SWIFT COBADEFFXXX
IBAN DE33215400600247600000
Amtsgericht Flensburg HRA 4264
USt-IdNr. DE813038919

Appendix B: Declaration of conformity of the A2010 nozzle

Horn GmbH & Co. KG hereby declares the conformity of the A2010 automatic nozzle to DIN EN 13012 and the general building authority test certificate P-TÜ7-01340.





HORN GmbH & Co. KG
Munketoft 42
24937 Flensburg
Deutschland

T +49 461-8696-0
F +49 461-8696-66

www.tecalemit.de
info@tecalemit.de